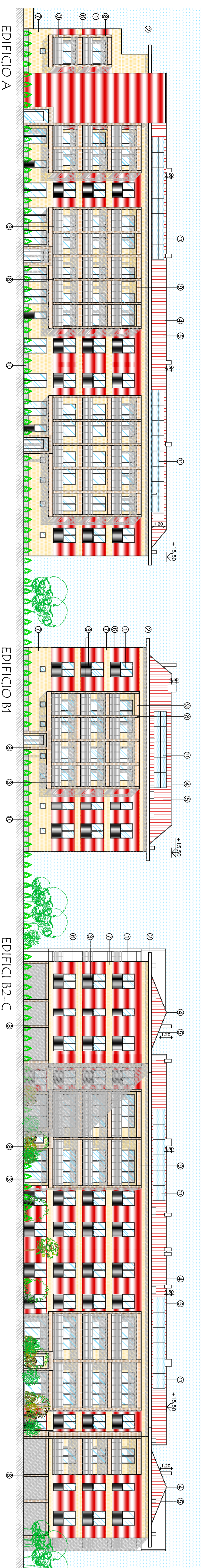


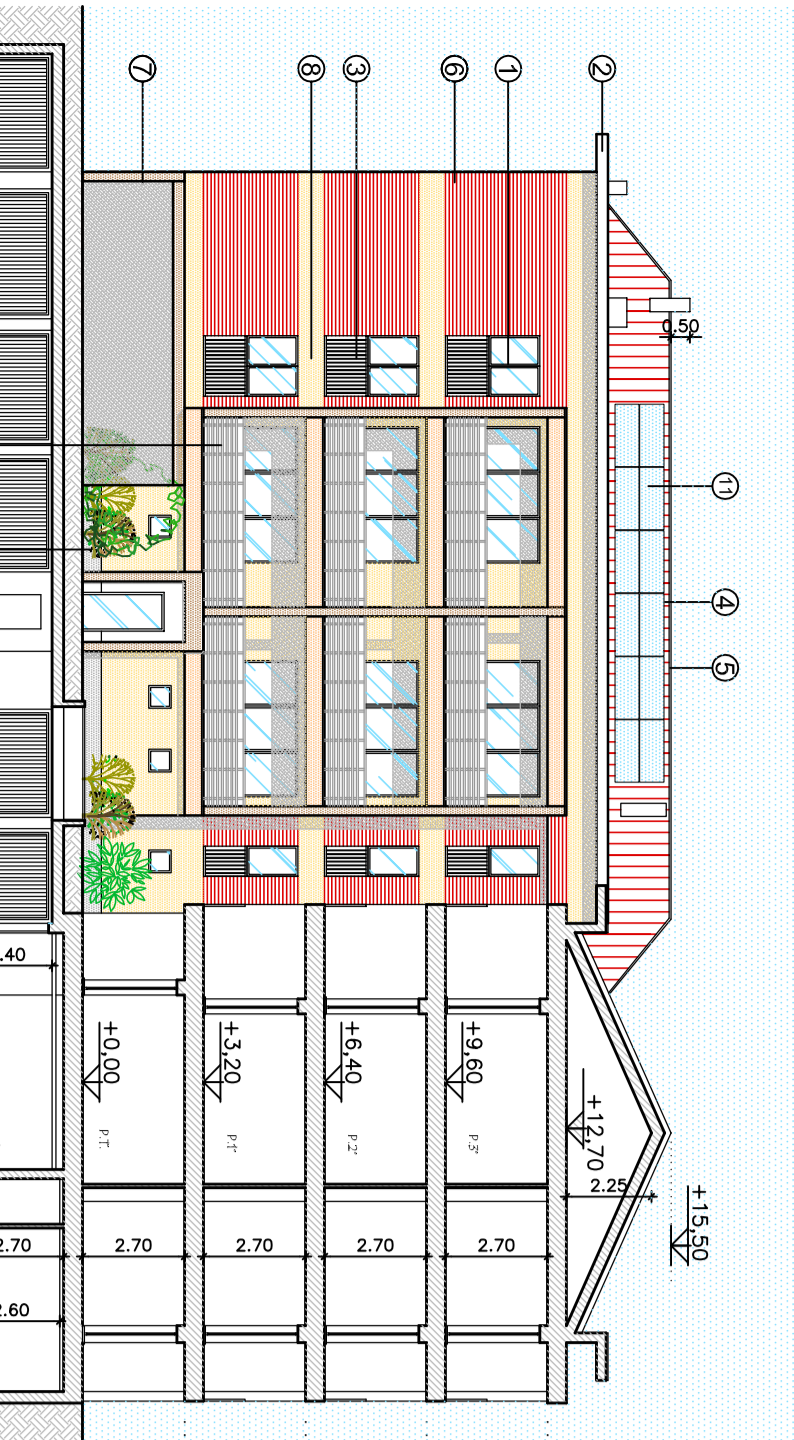
PROSPETTI SU CORSEILLO APERTO - EST (VISTA 1)



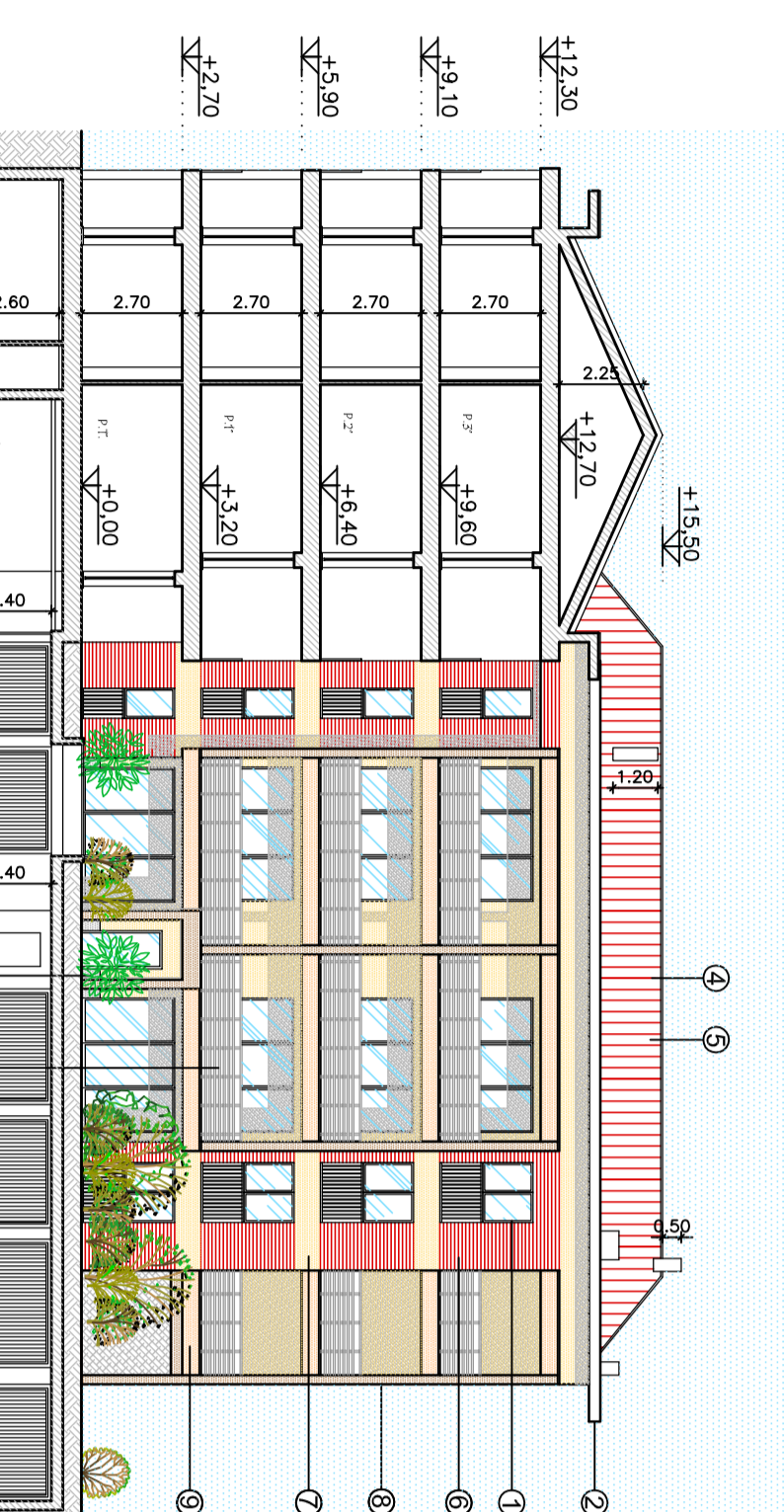
PROSPETTI PRINCIPALI SU VALETTO PEDONALE - OVEST (VISTA 2)



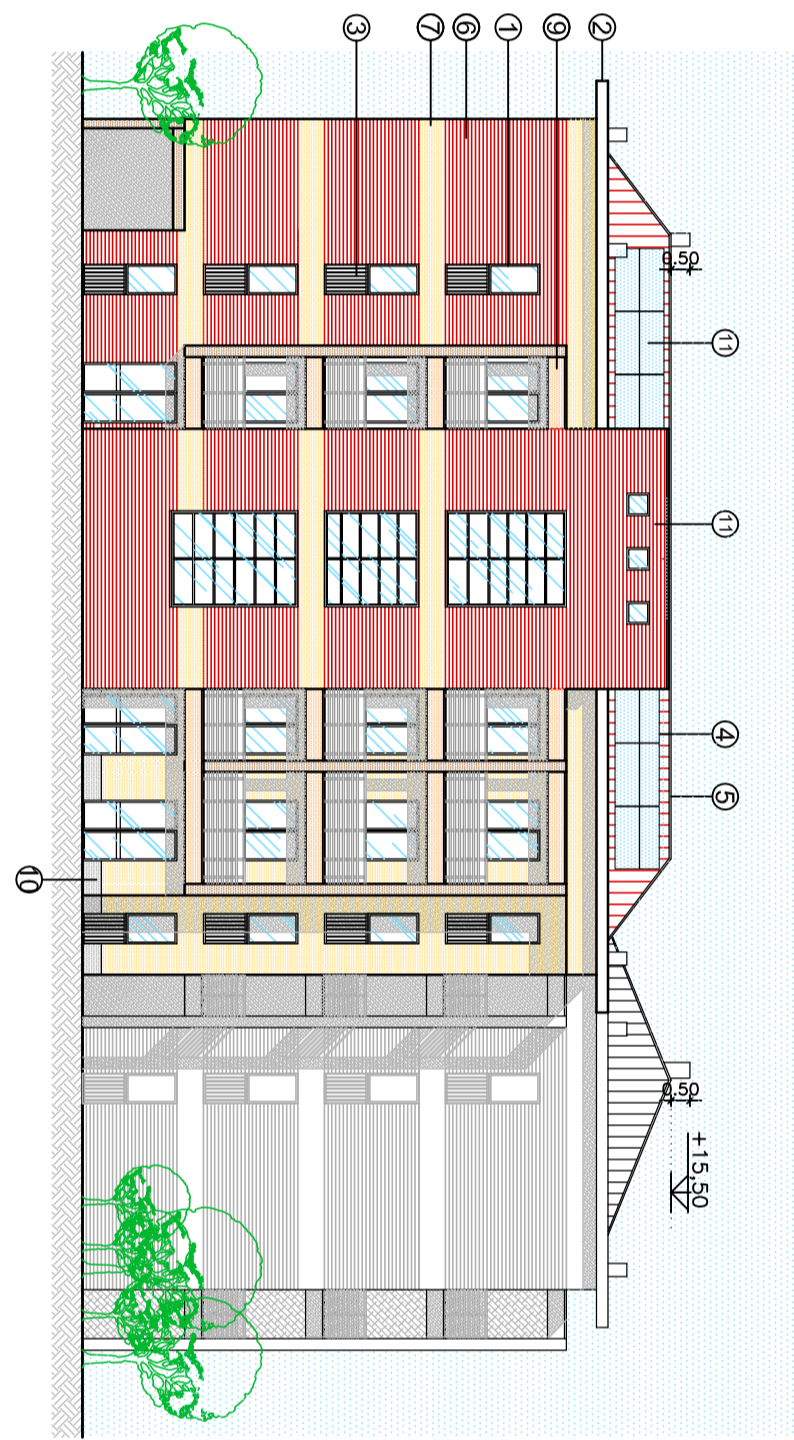
PROSPETTO INTERNO EDIFICIO B2 - SUD (VISTA 3)



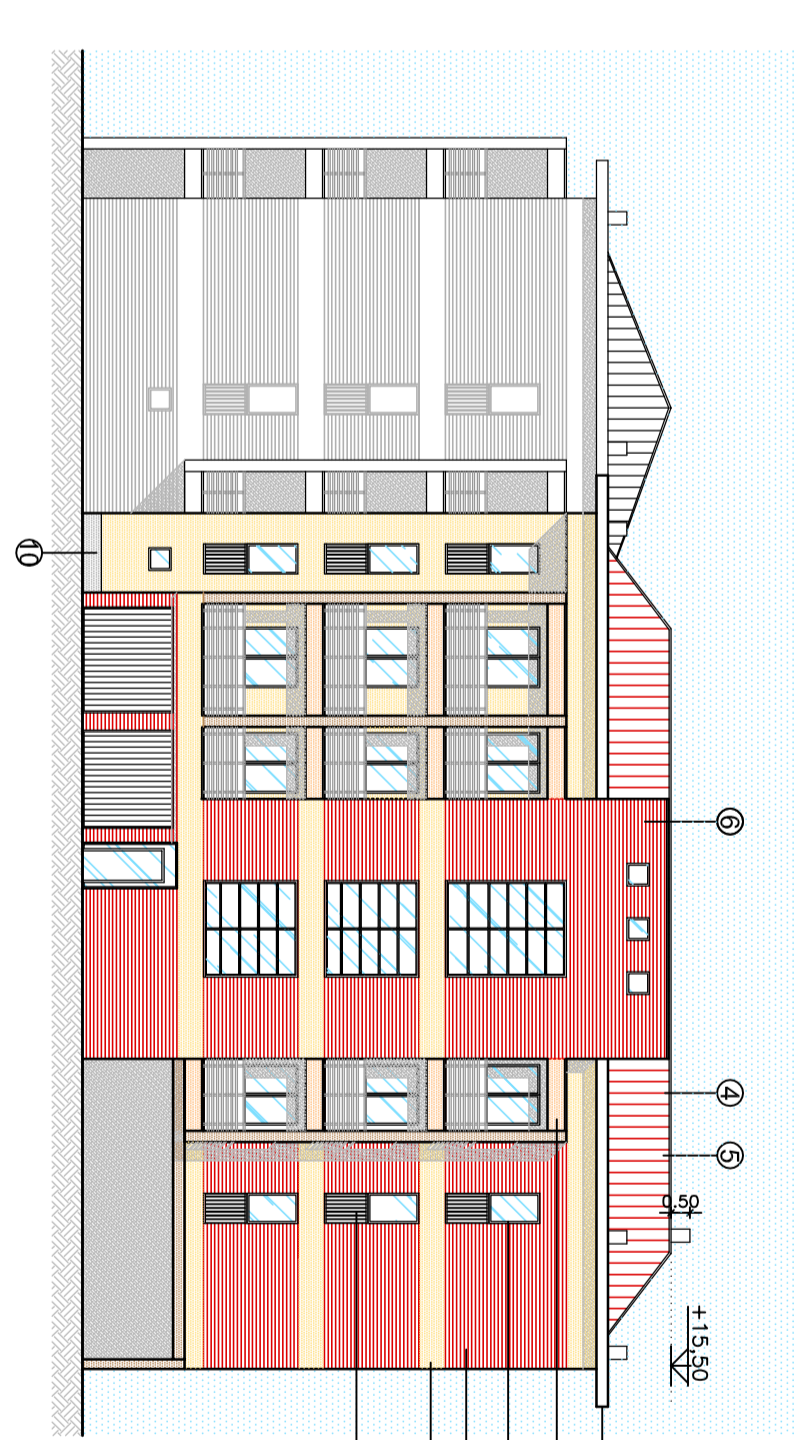
PROSPETTO INTERNO EDIFICIO C - NORD (VISTA 4)



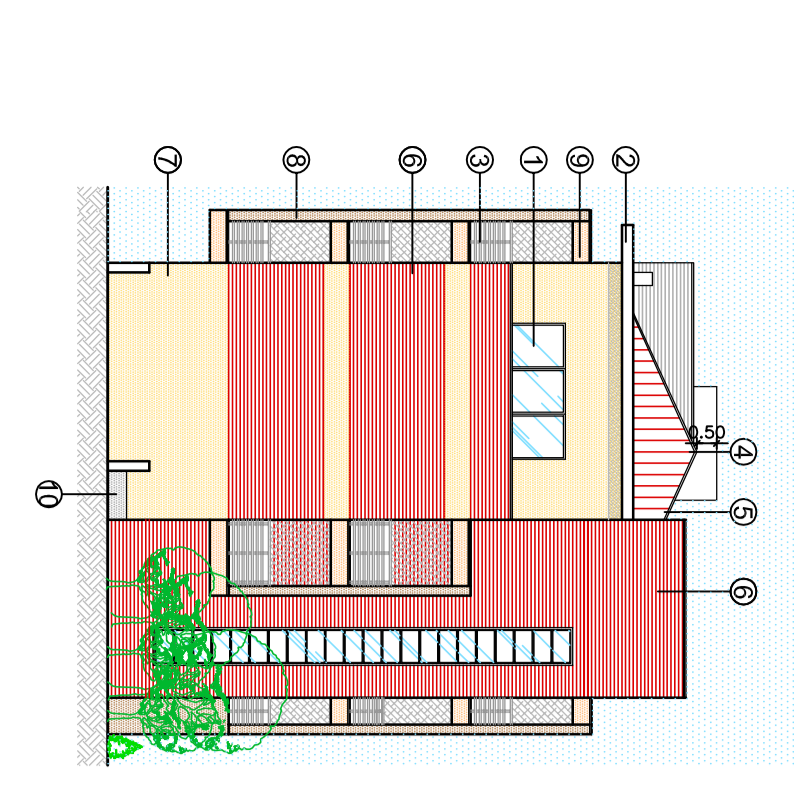
PROSPETTO SUD EDIFICIO C (VISTA 5)



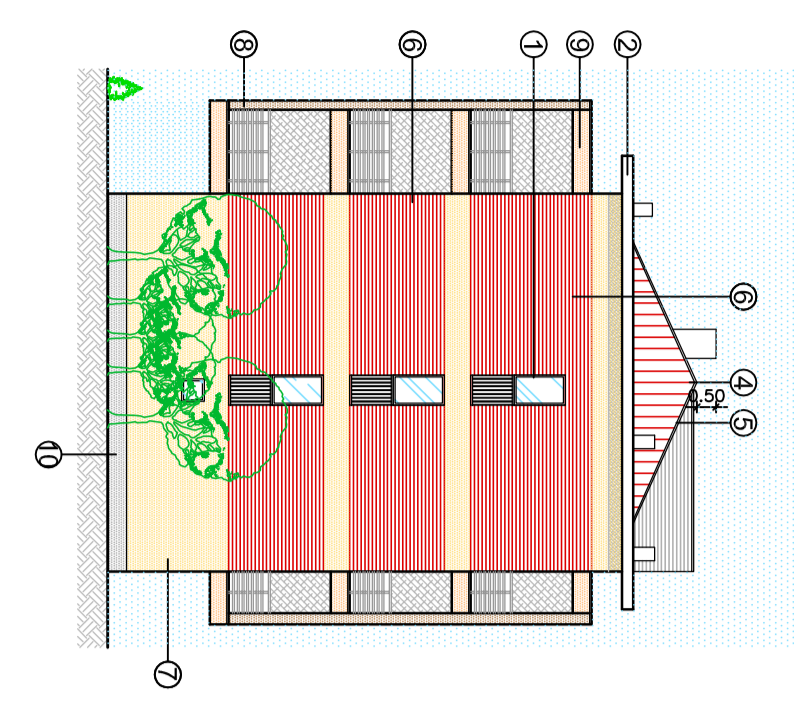
PROSPETTO NORD EDIFICIO B2 (VISTA 6)



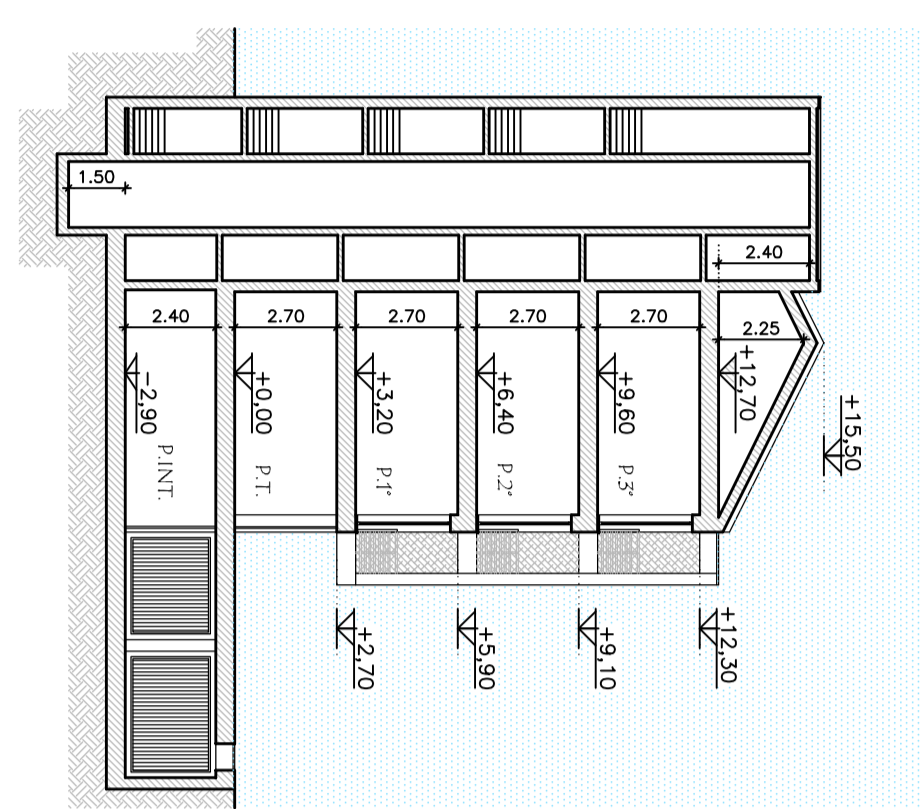
PROSPETTO NORD EDIFICIO A (VISTA 7)



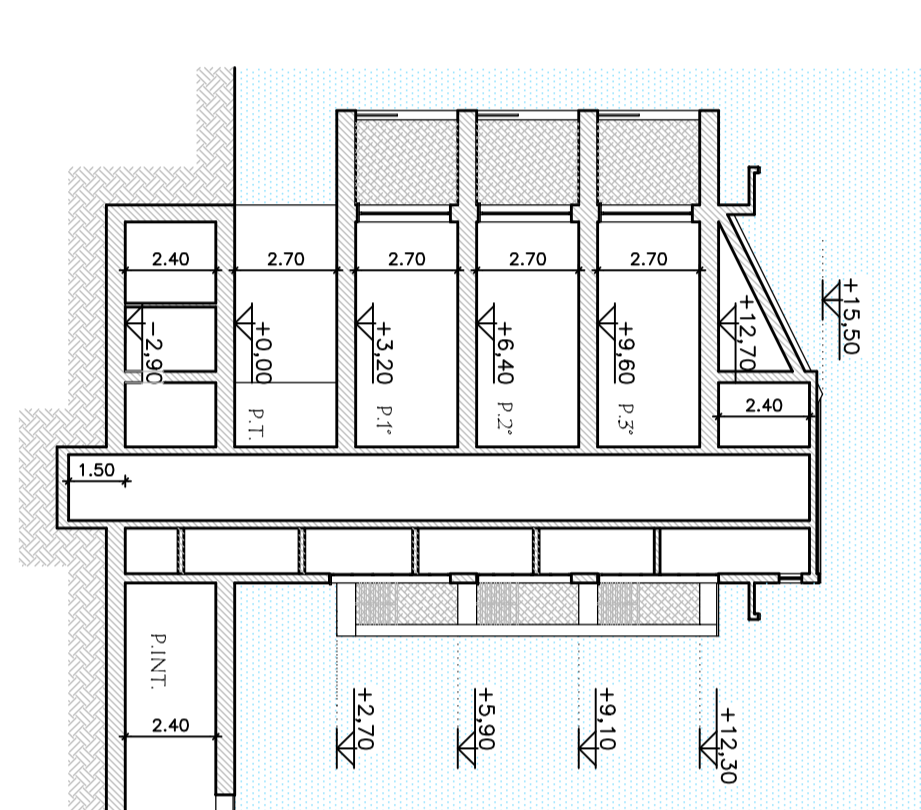
PROSPETTO SUD EDIFICIO A (VISTA 8)



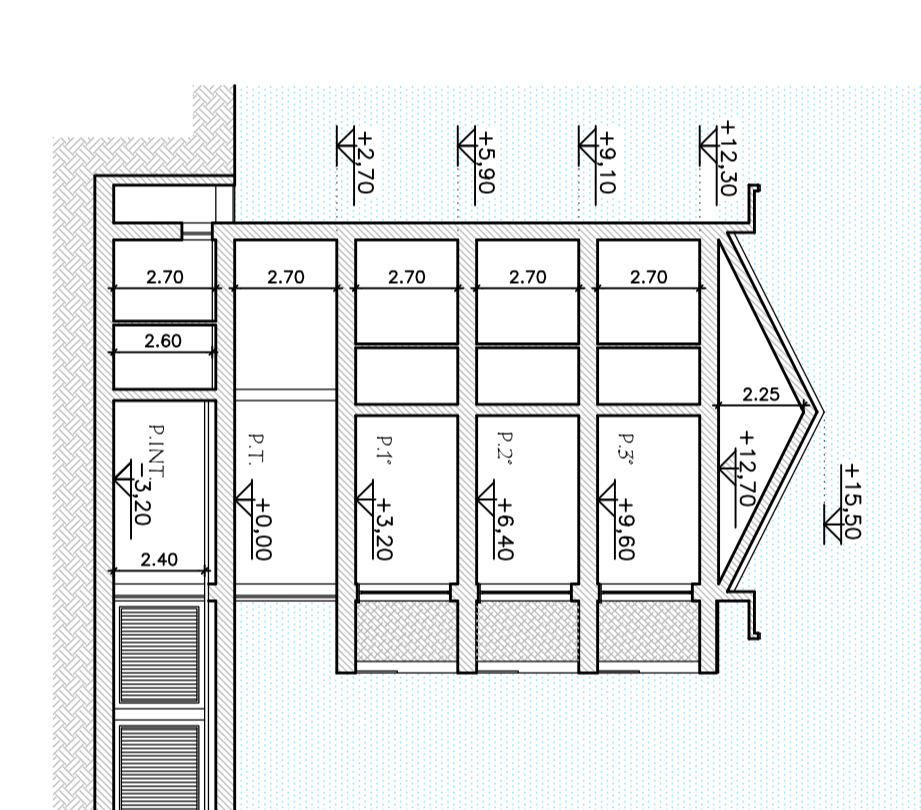
SEZIONE 1-1 EDIFICIO A



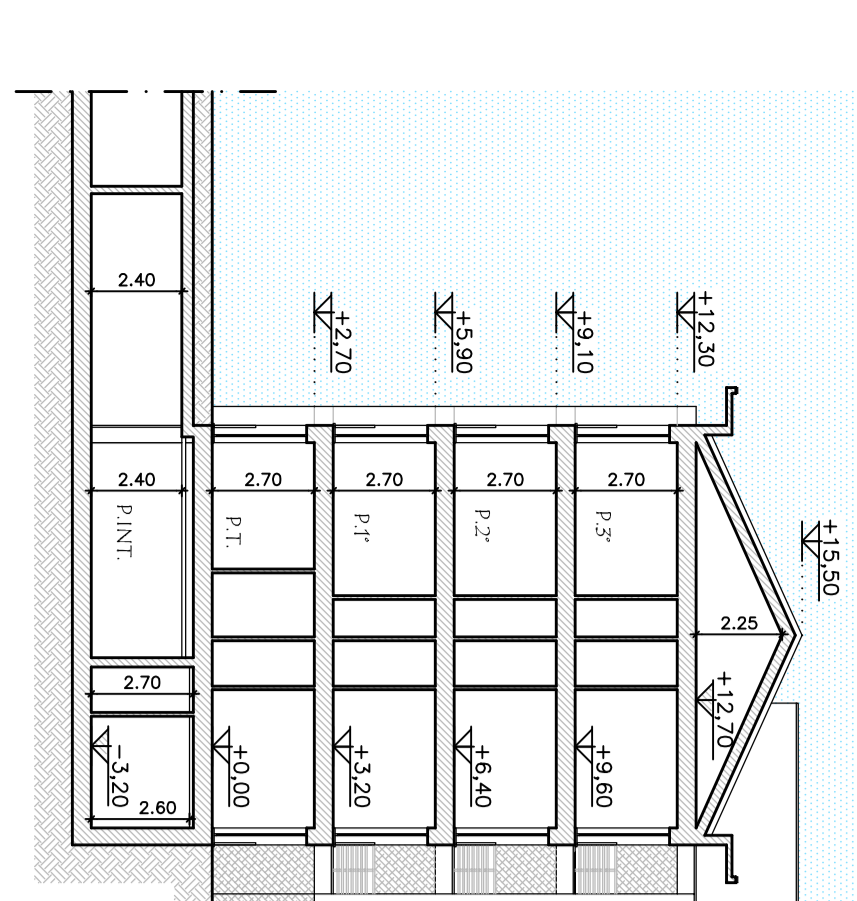
SEZIONE 2-2 EDIFICIO A



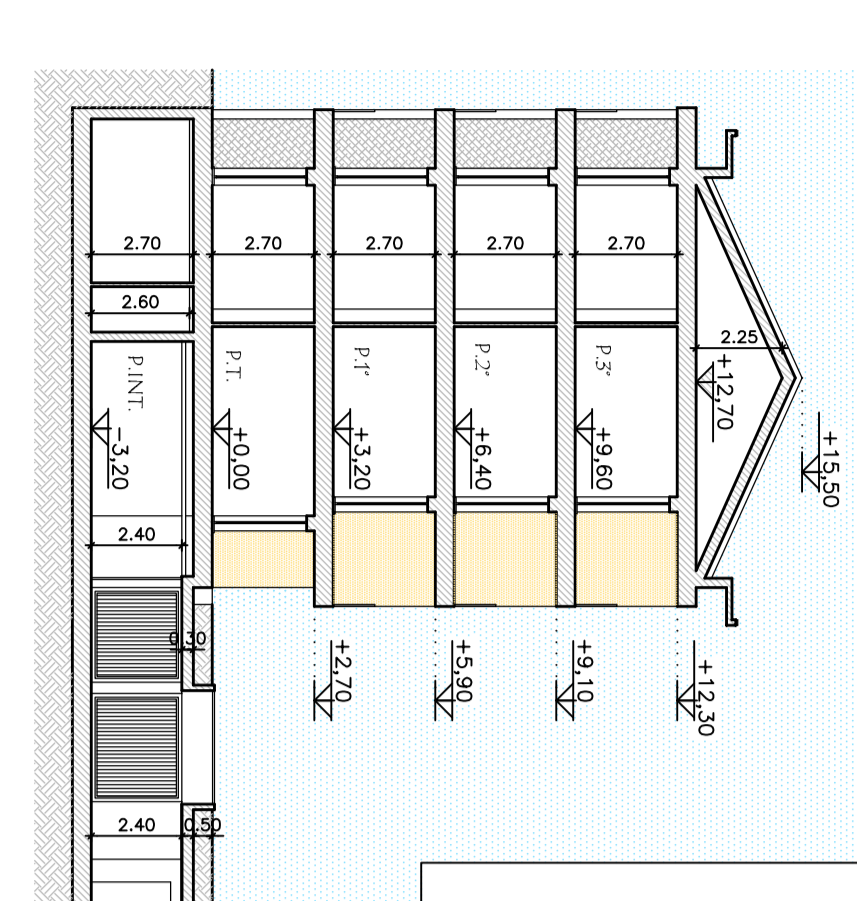
SEZIONE 3-3 EDIFICIO B1



SEZIONE 4-4 EDIFICIO C

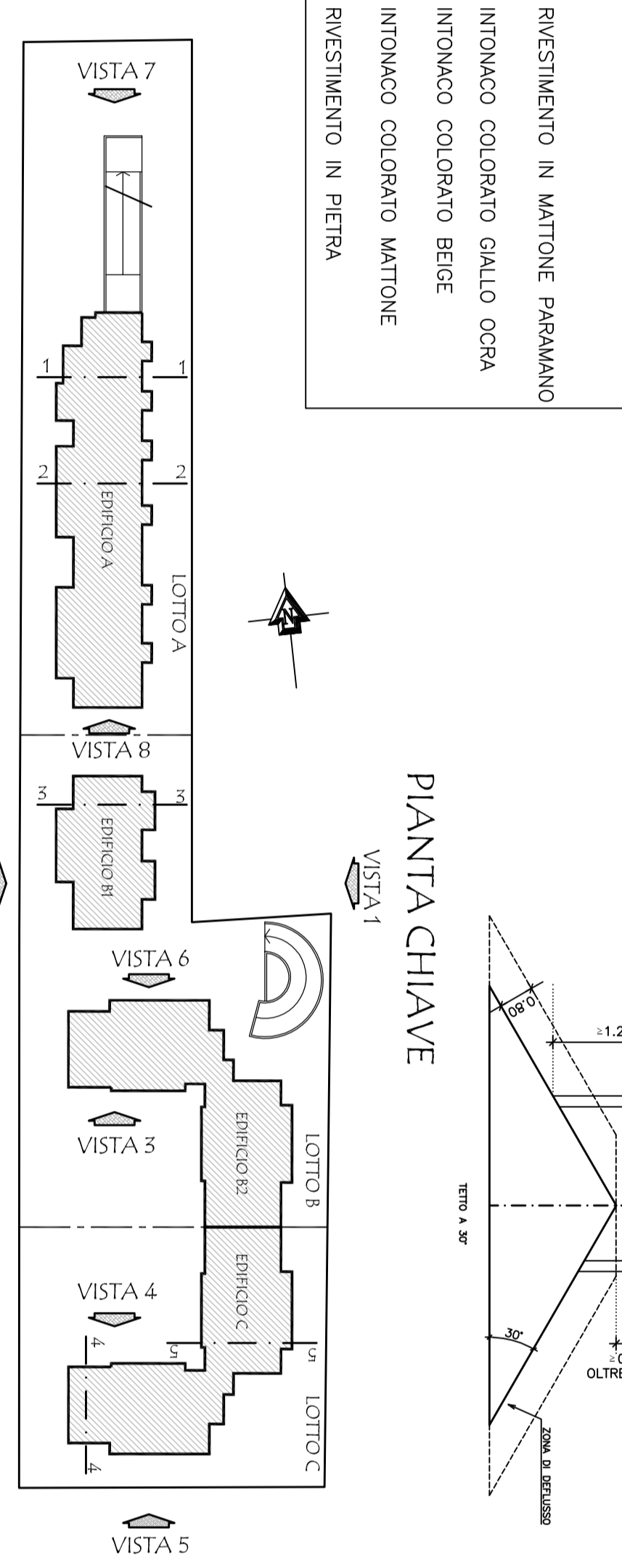


SEZIONE 5-5 EDIFICIO C

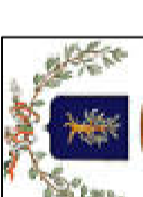


- LEGENDA MATERIALI**
- SERPAMANTI IN ALLUMINIO
 - GRONDAIA IN CLES VERNICIATA
 - PARAPETTO IN FERRO
 - GRIGIO MUCCHIO NERA
 - PREFABBRICATA SP 8/10
 - COPERTURA IN LAMIERA
 - RIVESTIMENTO IN MATTONE PARMIANO
 - INTONACO COLORE GIALLO OCRA
 - INTONACO COLORE BEIGE
 - INTONACO COLORE MATTONE
 - RIVESTIMENTO IN PIETRA

PIANTA CHIAVE



COMUNE DI BRUGHERIO
Provincia di Monza e Brianza



PERMESSO DI COSTRUIRE CONVENZIONATO
COLIBRI s.r.l. Via Solferino 18 - Milano
- AREA IN VIA VOLTURNO 41 -

**Copia Conforme all'Integrazione
Prot. 3232 del 30/01/2017**

TITOLO :
Prospetti Edifici A, B1, B2 e C - LOTTI A, B e C
Sezioni 1-1, 2-2, 3-3, 4-4, 5-5

IL PROGETTISTA :
I PROPONENTI :

DATA : GENNAIO 2017
AGG. :

SCALA : 1 : 200

TAV. :