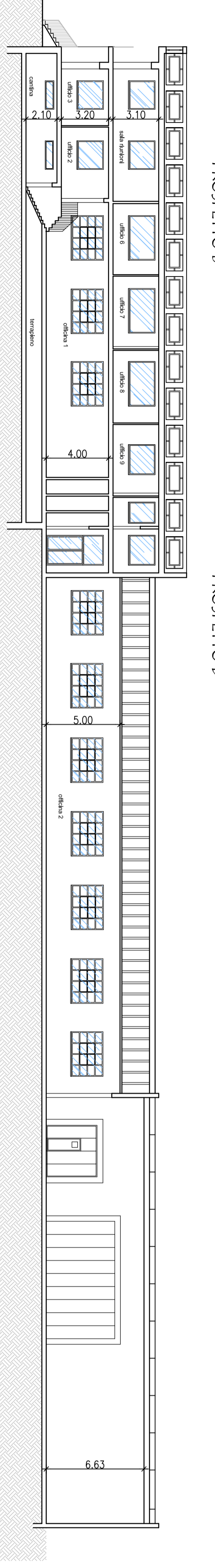
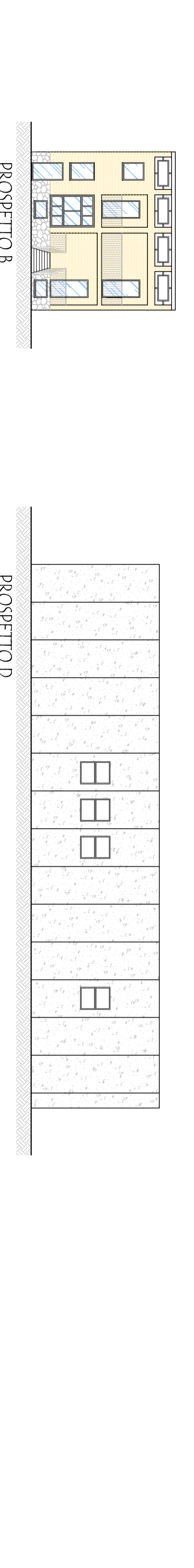
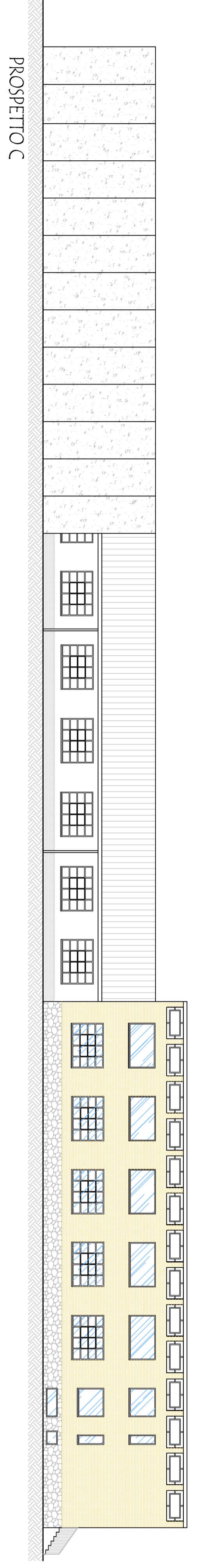
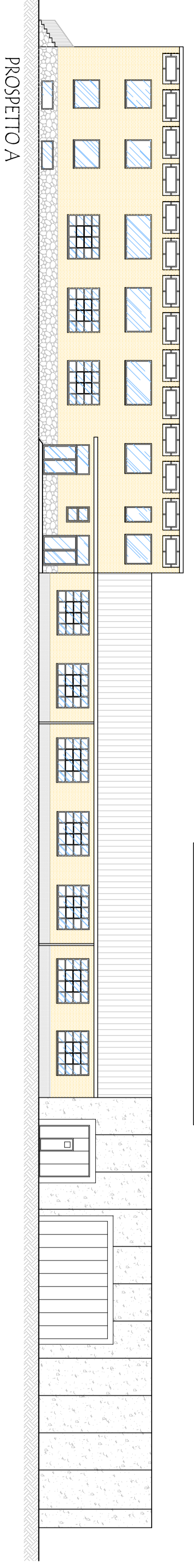


**VERIFICA ANALITICA SUP. EDIFICATIVA:**

<b>1</b> PIANO INTERERATO:	101,43m <sup>2</sup>	<b>6</b> SUP. TERRAPIENO (PIANO INTERERATO):	23,15 x 10,70 = 247,70m <sup>2</sup>
<b>2</b> PIANO TERRA:	112,87m <sup>2</sup>		2,80 x 3,80 = 10,64m <sup>2</sup>
	-1,05 x 7,91 = -8,30m <sup>2</sup>		2,11 x 3,27 = 6,90m <sup>2</sup>
	104,37m <sup>2</sup>		265,23m <sup>2</sup>
<b>3</b> OFFICINA 1 (PIANO TERRA):	272,20m <sup>2</sup>	<b>5</b> SUP. AUTONMESSA (PIANO TERRA):	3,73 x 5,01 = 18,69m <sup>2</sup>
	25,44 x 10,77 = 272,20m <sup>2</sup>		(0,38 x 5,01) + (1,81 x 2,77) = 2,77m <sup>2</sup>
<b>4</b> OFFICINA 2 (PIANO TERRA):	588,28m <sup>2</sup>		
	36,10 x 16,31 = 588,28m <sup>2</sup>		
<b>5</b> CAPANNONE (PIANO TERRA):	316,34m <sup>2</sup>		
	36,01 x 17,92 = 316,34m <sup>2</sup>		
<b>6</b> CAPANNONE (PIANO TERRA):	316,34m <sup>2</sup>		
	29,10 x 9,87 = 287,20m <sup>2</sup>		
<b>7</b> PIANO PRIMO:	362,99m <sup>2</sup>		
	35,71 x 10,70 = 382,00m <sup>2</sup>		
	-1,03 x 7,09 = -7,28m <sup>2</sup>		
	373,87m <sup>2</sup>		
<b>TOTALE SUPERFICIE EDIFICATIVA:</b>	101,43 + 104,37 + 272,20 + 588,28 + 316,34 + 373,87 = 2320,00m <sup>2</sup>		



**COMUNE DI BRUGHERIO**  
Provincia di Monza e Brianza

**PERMESSO DI COSTRUIRE CONVENZIONATO**  
**COLIBRI' s.r.l. Via Solferino 18 - Milano**  
**- AREA IN VIA VOLTURNO 41 -**

TITOLO: Stato di Fatto: Pianta, Prospetti e Sezione  
IL PROGETTISTA: I PROPONENTI:

DATA: SETTEMBRE 2016  
AGG.:  
SCALA: 1 : 200  
TAV.: **3**